



TITLE: The Effect of COVID19

Name: Mark White

Affiliation: Professor/Assistant Professor at Lieue University

Country: United States of America

Email ID: white.mark@outlook.com

ABSTRACT (upto 300 words)

A double suction centrifugal type of pump was converted into a hydraulic turbine (pat-pump acting as turbine). The casing was maintained and the pump impeller was replaced by a hydraulic runner. It was made of stainless steel with a diameter of 0.662 meter. It had 12 blades as compared to the 5 blades of the original pump impeller. It was assembled inside the original pump casing and was installed along the existing 0.9 m diameter water pipeline of the rio verde water consortium inc. Water treatment plant has an elevation of around 100 meters above sea level. A bypass line was connected along the existing pipeline to accommodate the installation of the PAT

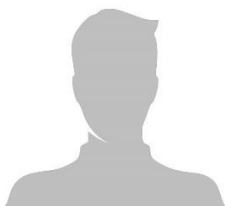
BIOGRAPHY (upto 200 words)

Mark White has completed his PHD at the age of 35 years from Stanford University, USA. He is the head of mechanical engineering department of Stanford University, USA. He has over 300 publications that have been cited over 700 times, and his publication h-index is 25. He has been serving as an editorial board member of several reputed journals.

Presenter Name: Mark White.

Mode of Presentation: Oral/Poster.

Contact number: +1 (346) 3481205



Upload your photo here.